



£1,575 PCM

Gunthorpe Street, Aldgate, London. E1

Flat | 1 Bedroom | 1 Bathroom

0203 689 0332



www.viewpropertiesuk.com



Step Inside

Key Features

- One double bedroom
- Wood flooring throughout
- Gas central heating
- Double glazed
- Communal roof terrace
- Furnished
- Private development
- Close to Aldgate East Station
- Excellent transport links
- Available 7th December

Property Description

View Properties is delighted to offer this stunning one-bedroom apartment on one of Spitalfields most historical streets. The apartment is offered furnished and comprises: Entrance hall; a combined living area and a modern fitted kitchen with appliances; a shower room and a double bedroom. It benefits from many restaurants and amenities around. Moreover, the fashionable range of shops and bars around Spitalfields is also nearby. The entertainment and hot-spots of Shoreditch and Liverpool Street are within walking distance. The apartment is seconds away from the high street but without any of the noise or pollution. The famous Brick Lane with all its restaurants and nightlife is close by. Aldgate East (Hammersmith and City and District lines) underground station is barely 30 seconds away. In addition, the property benefits from great bus and road transport connections.

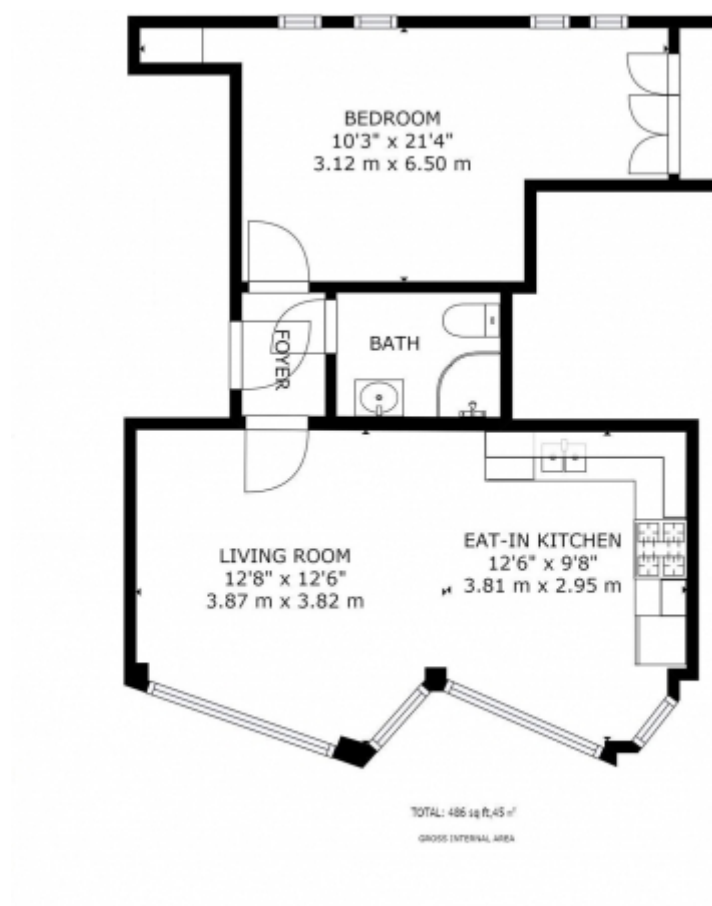
Main Particulars

View Properties is delighted to offer this stunning one-bedroom apartment on one of Spitalfields most historical streets. The apartment is offered furnished and comprises: Entrance hall; a combined living area and a modern fitted kitchen with appliances; a shower room and a double bedroom.

It benefits from many restaurants and amenities around. Moreover, the fashionable range of shops and bars around Spitalfields is also nearby. The entertainment and hot-spots of Shoreditch and Liverpool Street are within walking distance. The apartment is seconds away from the high street but without any of the noise or pollution. The famous Brick Lane with all its restaurants and nightlife is close by.

Aldgate East (Hammersmith and City and District lines) underground station is barely 30 seconds away. In addition, the property benefits from great bus and road transport connections.





This floorplan is for illustrative purposes only and the location of doors, windows and other items are approximate.

Telephone: 0203 689 0332



www.viewpropertiesuk.com