



£1,825 PCM

Chicksand Street, Spitalfields, London. E1

Apartment | 2 Bedrooms | 1 Bathroom

0203 689 0332



www.viewpropertiesuk.com



Step Inside

Key Features

- Two good-sized bedrooms (equal size)
- 2nd floor apartment with private balcony
- Dual aspects bright and light all day long
- Fully integrated kitchen with dishwasher & washer/dryer
- Wood flooring throughout
- Gas central heating
- Furnished
- Off Brick Lane and less than 10-minute walk to Liverpool Street
- Excellent transport links
-

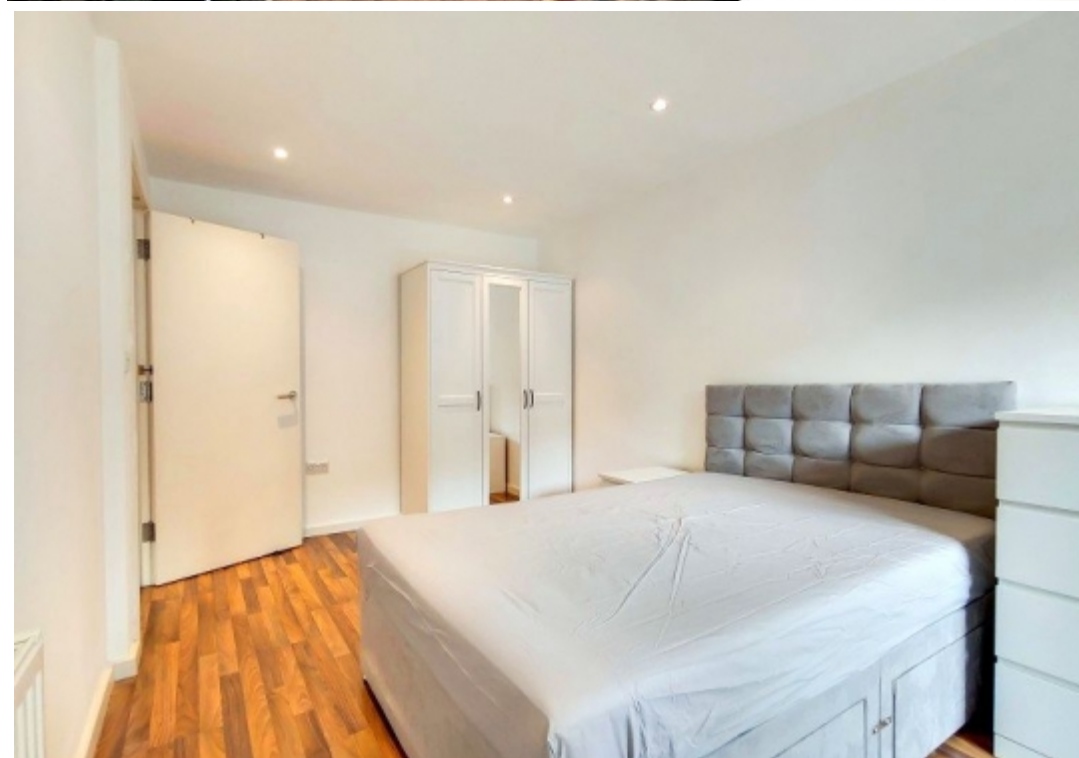
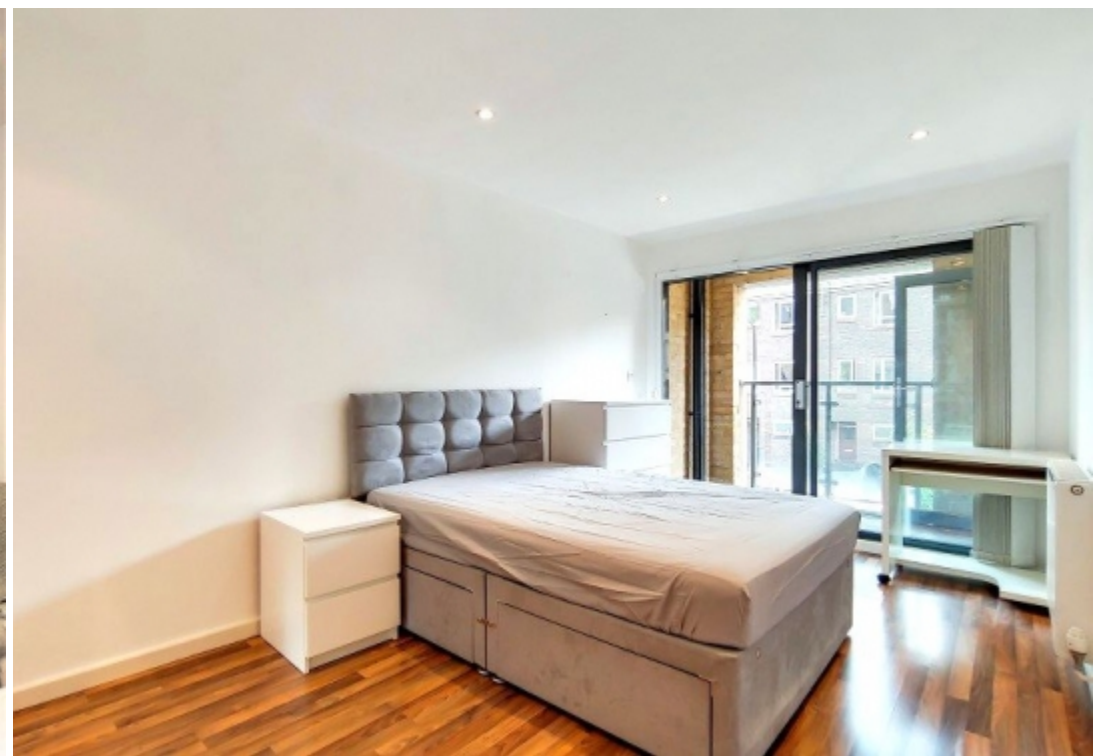
Property Description

Spacious two-bedroom second-floor apartment in the heart of Spitalfields, moments from Shoreditch and the City. The accommodation is offered furnished and comprises: Entrance hall; combined living area and modern fitted kitchen with appliances; one modern bathroom and two equal size double bedrooms both with access to the balcony. Chicksand Street is ideally located for those looking to be in the heart of the action yet within a short walk to the Office. The local areas of Spitalfields, Shoreditch, and Hoxton offer a wide array of restaurants, bars, and nightlife. Transport links are also ideal with Shoreditch, Liverpool Street, and Aldgate East Stations close by for easy access to the City, Canary Wharf, and the West End.

Main Particulars

Spacious two-bedroom second-floor apartment in the heart of Spitalfields, moments from Shoreditch and the City. The accommodation is offered furnished and comprises: Entrance hall; combined living area and modern fitted kitchen with appliances; one modern bathroom and two equal size double bedrooms both with access to the balcony.

Chicksand Street is ideally located for those looking to be in the heart of the action yet within a short walk to the Office. The local areas of Spitalfields, Shoreditch, and Hoxton offer a wide array of restaurants, bars, and nightlife. Transport links are also ideal with Shoreditch, Liverpool Street, and Aldgate East Stations close by for easy access to the City, Canary Wharf, and the West End.





GROUND INTERNAL AREA
60.53 sqm / 651.54 sqft

NET INTERNAL AREA (GFA)
42.00 sqm / 451.54 sqft

EXTERNAL ROOFTOP AREA
18.53 sqm / 200.00 sqft

EXTERNAL ROOFTOP AREA
18.53 sqm / 200.00 sqft

This floorplan is for illustrative purposes only and the location of doors, windows and other items are approximate.

Telephone: 0203 689 0332