



£1,000 PCM

Cheshire Street, Shoreditch, London. E2

Flat Share | 1 Bathroom



Step Inside

Key Features

- Including all bills double room
- WiFi
- Wood flooring throughout
- Fully furnished
- Private development
- 3rd Floor apartment
- Close to local amenities
- Available 18th May
- No couples
- No lounge/reception

Property Description

Room only - All bills included double room located in Shoreditch. This property comprises a furnished double room, shared bathroom, and kitchen/dining area. Cheshire Street is ideally located for those looking to be in the heart of the action yet within a short walk to the Office. The local areas of Shoreditch, Spitalfields, and Hoxton offer a wide array of restaurants, bars, and nightlife. Transport links are also ideal with Shoreditch High Street, Liverpool Street, and Aldgate East stations close by for easy access to the City, Canary Wharf, and the West End. EPC: C Council tax band: C

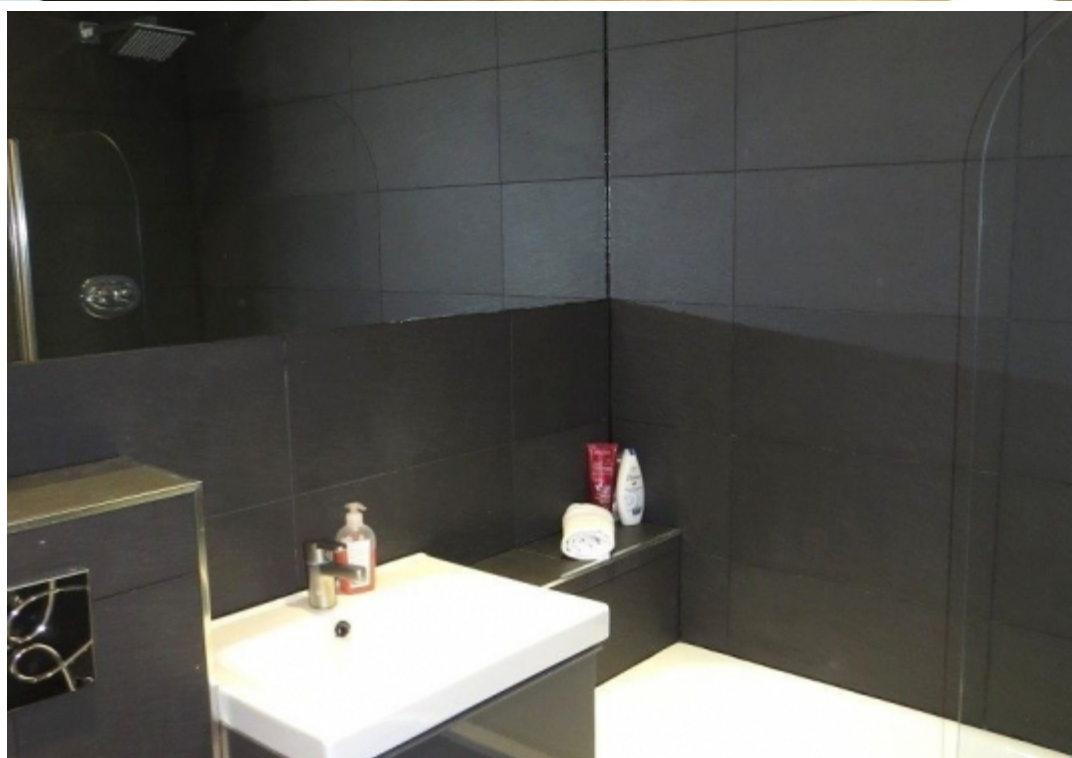
Main Particulars

Room only - All bills included double room located in Shoreditch. This property comprises a furnished double room, shared bathroom, and kitchen/dining area.

Cheshire Street is ideally located for those looking to be in the heart of the action yet within a short walk to the Office. The local areas of Shoreditch, Spitalfields, and Hoxton offer a wide array of restaurants, bars, and nightlife. Transport links are also ideal with Shoreditch High Street, Liverpool Street, and Aldgate East stations close by for easy access to the City, Canary Wharf, and the West End.

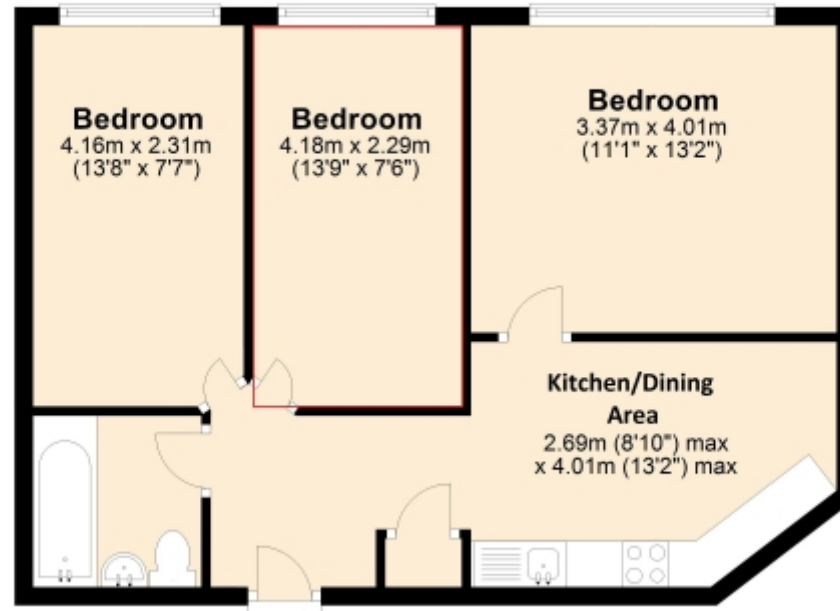
EPC: C

Council tax band: C



Third Floor

Approx. 53.6 sq. metres (576.7 sq. feet)



Total area: approx. 53.6 sq. metres (576.7 sq. feet)

This floorplan is for illustrative purposes only and the location of doors, windows and other items are approximate.

Agents notes: All measurements are approximate and for general guidance only and whilst every attempt has been made to ensure accuracy, they must not be relied on. The fixtures, fittings and appliances referred to have not been tested and therefore no guarantee can be given that they are in working order. Internal photographs are reproduced for general information and it must not be inferred that any item shown is included with the property. Copyright © 2024 00337380 Property Office Ltd. All rights reserved. 0203 689 0332

Telephone: 0203 689 0332



www.viewpropertiesuk.com