



£1,950 PCM

Great Eastern Road, Stratford, London. E15

Apartment | 2 Bedrooms | 2 Bathrooms

0203 689 0332



[www.viewpropertiesuk.com](http://www.viewpropertiesuk.com)



# Step Inside

---

## Key Features

- Luxury two double bedroom apartment
- Winter garden
- 7th floor
- Master bedroom with fitted wardrobes and en-suite shower room
- 24 hour concierge
- Secure bicycle storage
- Approx. 776 sq. ft
- Residents' only gymnasium and Wi-Fi lounge
- Moments from Stratford station and Westfields shopping mall
- Available 1st June

## Property Description

Spacious two-bedroom, two-bathroom apartment on the 7th floor of the Stratosphere Tower development; ideally located for Stratford's transport links and amenities. This apartment includes an open plan living and dining area, fitted kitchen with fully integrated appliances, wood flooring, full-length windows, underfloor heating, video entry phone system, master bedroom with fitted wardrobes and en suite shower room, modern bathroom suite, and a winter garden with views facing south. Residents will also have access to a 24-hour concierge service, residents' rooftop garden, a gymnasium, a Wi-Fi lounge, and secure bicycle storage. There are several amenities located nearby including Westfield Stratford City and the Stratford Centre. The development is located near Stratford station providing Underground, Overground, and DLR services for commutes towards the City and West End.

## Main Particulars

Spacious two-bedroom, two-bathroom apartment on the 7th floor of the Stratosphere Tower development; ideally located for Stratford's transport links and amenities. This apartment includes an open plan living and dining area, fitted kitchen with fully integrated appliances, wood flooring, full-length windows, underfloor heating, video entry phone system, master bedroom with fitted wardrobes and en suite shower room, modern bathroom suite, and a winter garden with views facing south.

Residents will also have access to a 24-hour concierge service, residents' rooftop garden, a gymnasium, a Wi-Fi lounge, and secure bicycle storage. There are several amenities located nearby including Westfield Stratford City and the Stratford Centre. The development is located near Stratford station providing Underground, Overground, and DLR services for commutes towards the City and West End.



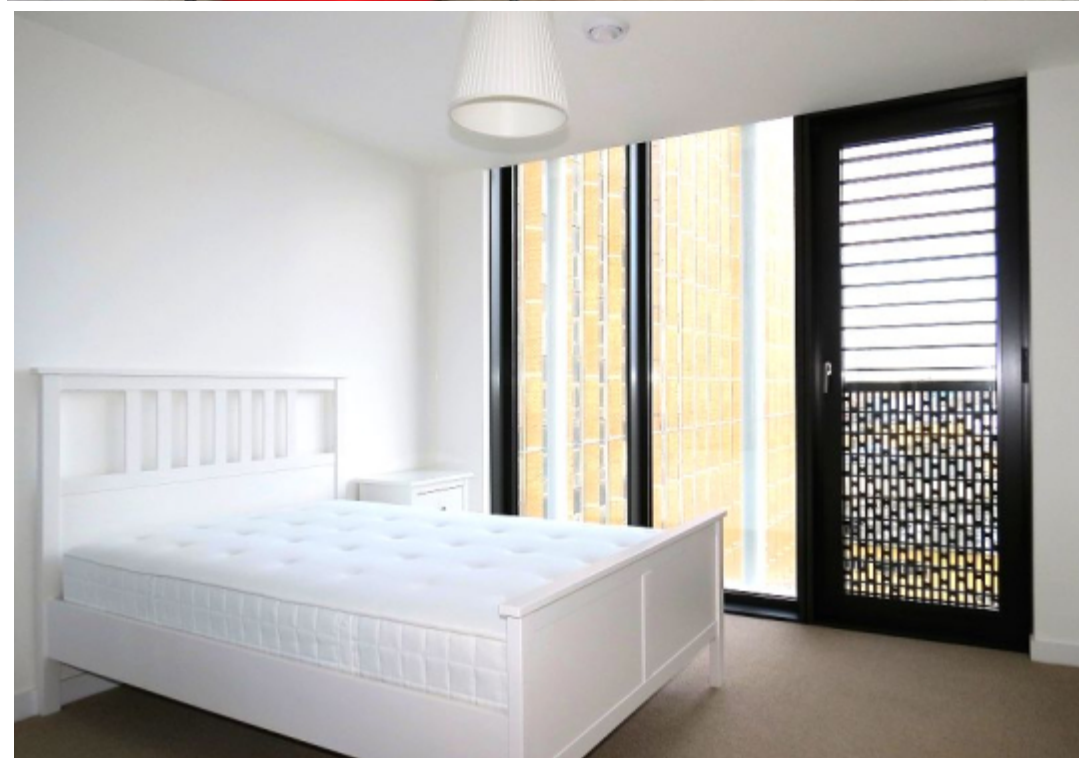




Image not found

This floorplan is for illustrative purposes only and the location of doors, windows and other items are approximate.

Telephone: 0203 689 0332



---

[www.viewpropertiesuk.com](http://www.viewpropertiesuk.com)