



£2,200 PCM

Heneage Street, Spitalfields, London. E1

Flat | 2 Bedrooms | 1 Bathroom



Step Inside

Key Features

- Two double bedrooms
- Newly decorated
- South facing communal patio area
- Wood flooring throughout
- Washer/dryer
- Gas central heating
- Furnished
- Excellent transport links
- Available Now

Property Description

View Properties are pleased to offer this bright and spacious newly decorated two-bedroom flat on the third floor in the heart of Spitalfields, moments from Shoreditch and the City. The accommodation is offered furnished and comprises: Entrance hall; reception/lounge; modern fitted kitchen with appliances; one modern bathroom and two double bedrooms. Heneage Street is ideally located for those looking to be in the heart of the action yet within a short walk to the place of work or study. The local areas of Spitalfields, Shoreditch, and Hoxton offer a wide array of restaurants, bars, and nightlife. Transport links are also ideal with Shoreditch, Liverpool Street, and Aldgate East Stations close by for easy access to the City, Canary Wharf, and the West End. EPC: D Council tax band: B

Main Particulars

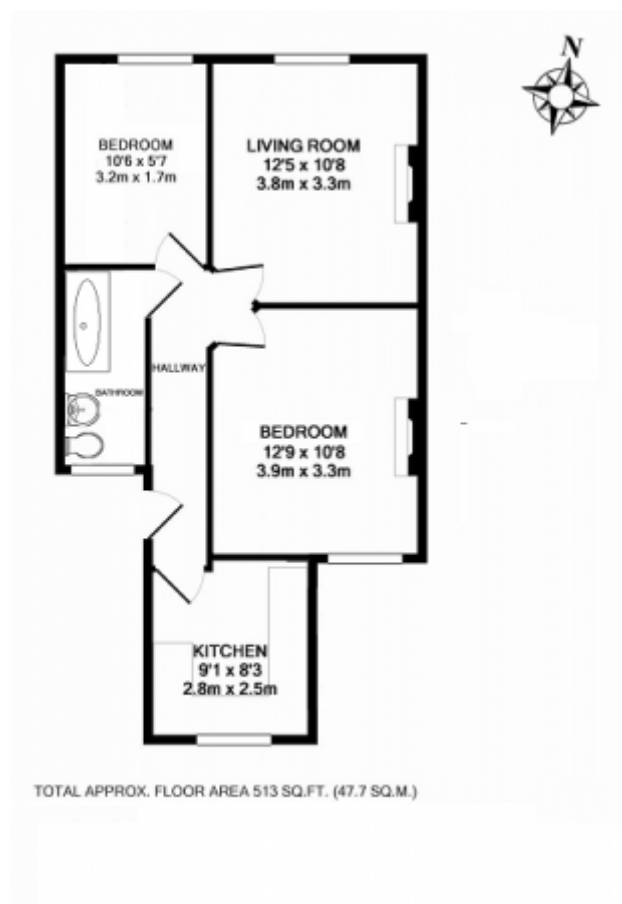
View Properties are pleased to offer this bright and spacious newly decorated two-bedroom flat on the third floor in the heart of Spitalfields, moments from Shoreditch and the City. The accommodation is offered furnished and comprises: Entrance hall; reception/lounge; modern fitted kitchen with appliances; one modern bathroom and two double bedrooms.

Heneage Street is ideally located for those looking to be in the heart of the action yet within a short walk to the place of work or study. The local areas of Spitalfields, Shoreditch, and Hoxton offer a wide array of restaurants, bars, and nightlife. Transport links are also ideal with Shoreditch, Liverpool Street, and Aldgate East Stations close by for easy access to the City, Canary Wharf, and the West End.

EPC: D

Council tax band: B





This floorplan is for illustrative purposes only and the location of doors, windows and other items are approximate.

Telephone: 0203 689 0332



www.viewpropertiesuk.com