



£1,400 PCM

Felixstowe Court, Royal Docks, London. E16

Flat | 1 Bedroom | 1 Bathroom



# Step Inside

---

## Key Features

- One double bedroom
- Including water bills
- Parking available at an extra cost
- Wood flooring throughout
- Double glazed
- Fitted kitchen with appliances
- Furnished
- Close to London City Airport
- Available 20th April

## Property Description

Spacious one-bedroom flat located within Felixstowe Court, Gallions Reach, and just a ten-minute walk to King George V DLR station with easy access to the City, Canary Wharf, and London City Airport. Situated on the first floor, the property is offered furnished and comprises: Entrance hall; a spacious lounge; a fitted kitchen with appliances; one double bedroom, and one bathroom. Council Tax Band: B EPC: B

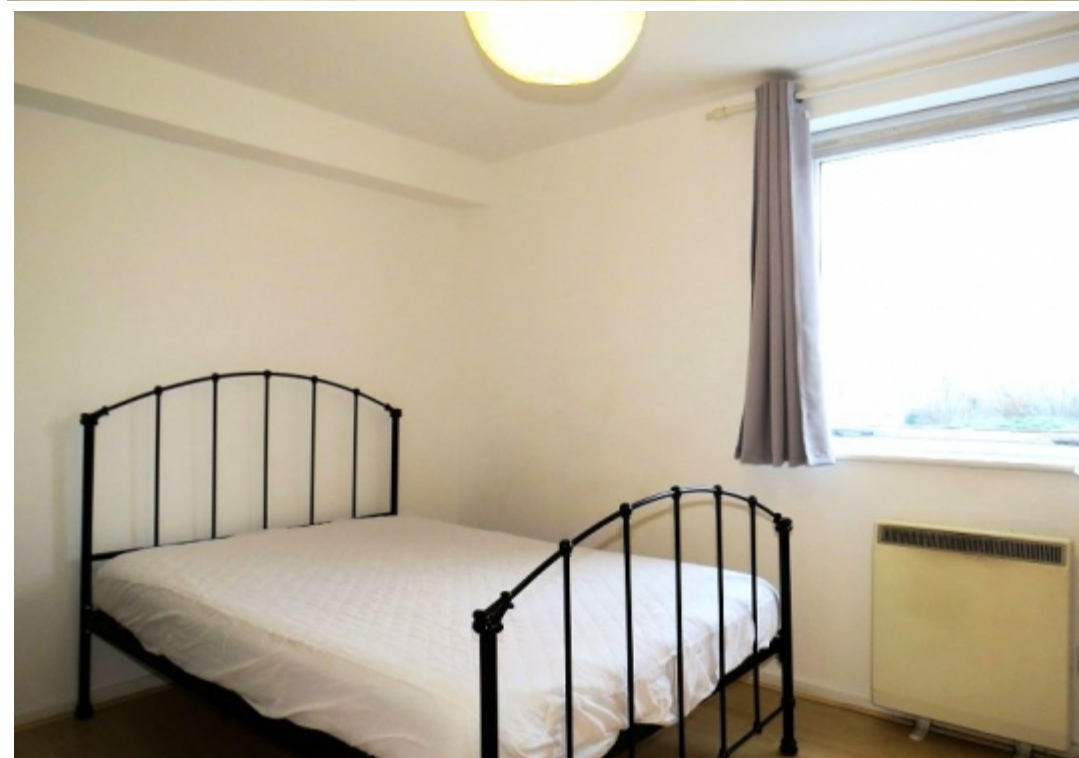
## Main Particulars

Spacious one-bedroom flat located within Felixstowe Court, Gallions Reach, and just a ten-minute walk to King George V DLR station with easy access to the City, Canary Wharf, and London City Airport. Situated on the first floor, the property is offered furnished and comprises: Entrance hall; a spacious lounge; a fitted kitchen with appliances; one double bedroom, and one bathroom.

Council Tax Band: B

EPC: B





Telephone: 0203 689 0332



---

[www.viewpropertiesuk.com](http://www.viewpropertiesuk.com)